

SLIMLINE WALL MOUNT BASIN

Product Code 400215-F-0TCOM

400215-F-LTCOM

400215-F-RTCOM

Features and benefits

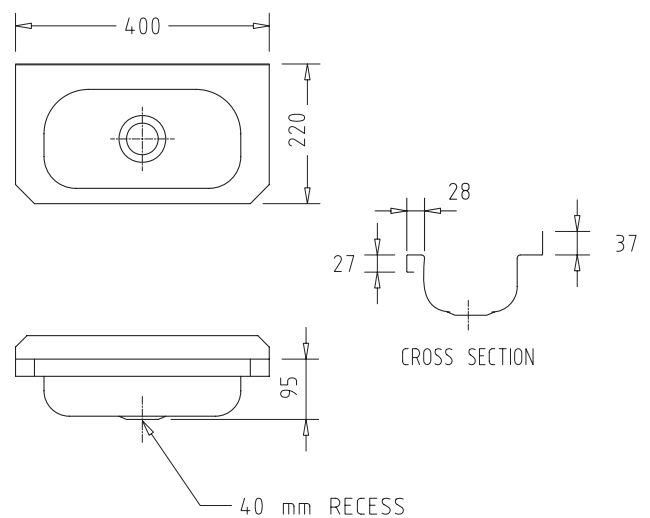
- Slimline space saving design
- Seamless construction
- Highly polished stainless steel
- Available pre-punched
- Economical

Product information

Woodroffe's Slimline Wash Basin is the ideal solution for workshops, bars, toilets or kitchens where a stainless steel basin is required and space is at a premium. The slim 400mm x 215mm overall dimensions and chamfered front corners allow these basins to be easily installed in the smallest of areas without compromising on quality or functionality.



400215-F-0TCOM



A HillsCompany



Woodroffe Equipment Australia

Toll free Ph 1300 361 053

Toll free Fax 1300 139 707

www.woodroffe.com.au